

ODS 96 B / UPG 10
Configuration software



1	ODS 96B configuration software	3
1.1	Connecting the ODS 96B to a PC.....	3
1.2	Installing the configuration software.....	4
1.3	Starting the program	4
1.4	Main window of the ODS 96B configuration software.....	5
1.5	Configuration window.....	7
1.5.1	Description of the command buttons	7

Figure 1.1:	Connecting the ODS 96B to a PC via the UPG 10 programming terminal.....	3
Figure 1.2:	Device selection	4
Figure 1.3:	ODS 96B configuration software - main window	5
Figure 1.4:	ODS 96B configuration software - measurement.....	6
Figure 1.5:	ODS 96B configuration software - configuration window	7

1 ODS 96B configuration software

General description

The ODS 96B configuration software can be used both for the direct configuration of data with the ODS 96B connected, as well as "offline" without a sensor connected for the generation of device configurations.

If no ODS 96B is connected, a dialogue is displayed after starting the program in which you have to choose the device model (see chapter 1.3). After the offline generation of a parameter configuration, this configuration can be transmitted to the ODS 96B after connection to the PC has been established.

You can download the software on the Internet from www.leuze.de.

1.1 Connecting the ODS 96B to a PC

The ODS 96B is connected to a PC via the UPG 10 programming terminal. The terminal is simply inserted between the ODS 96B and the connection cable. The UPG 10 is connected to the PC via the serial interface cable that ships with the UPG 10.

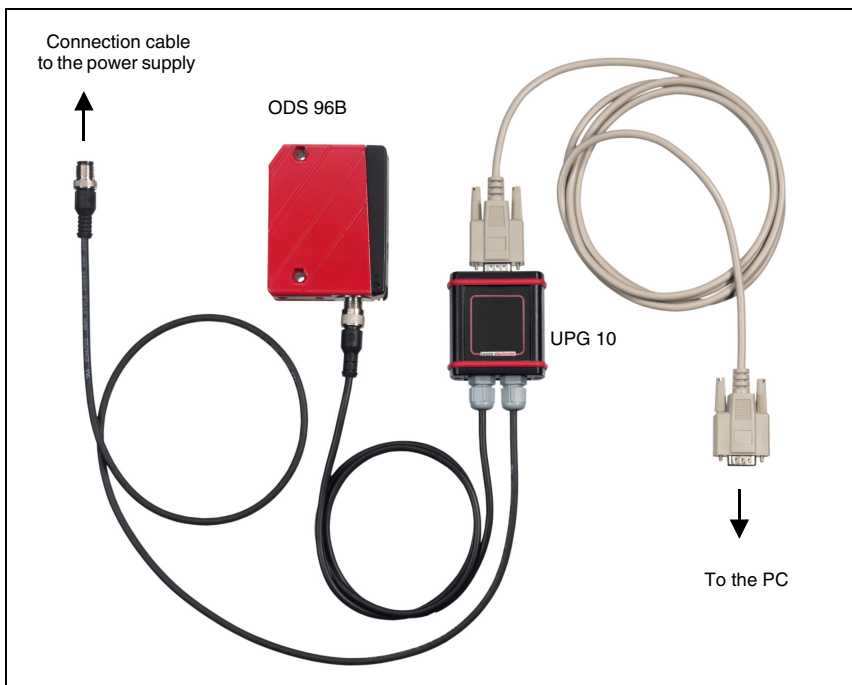


Figure 1.1: Connecting the ODS 96B to a PC via the UPG 10 programming terminal

1.2 Installing the configuration software

Requirements for the installation of the ODS 96B configuration software:

- Pentium® or faster Intel® processor (or compatible models, e.g. AMD®)
- At least 64 MB free main memory (RAM)
- Hard disk with at least 30 MB free memory
- RS 232 interface for sensor configuration
- Microsoft® Windows 98/NT/2000/XP

Starting the installation file

↳ Choose **Start** → **Run**. Insert drive and name of the installation file (e.g.: d:\setup.exe) and hit **OK**.

↳ In the following window, define the path for the installation directory and confirm with **End**.

1.3 Starting the program

After successful installation and restart of the computer, the configuration software is ready to use.

↳ Select the *ODS 96B configuration software icon* from the program group.

Without connected ODS, the following window appears after the program start, letting you choose a device:

Additional window without connected ODS 96B

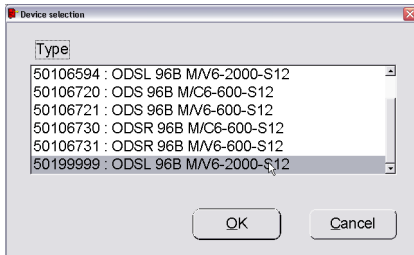


Figure 1.2: Device selection

1.4 Main window of the ODS 96B configuration software

After selecting a device type and confirming with OK, the following window appears:

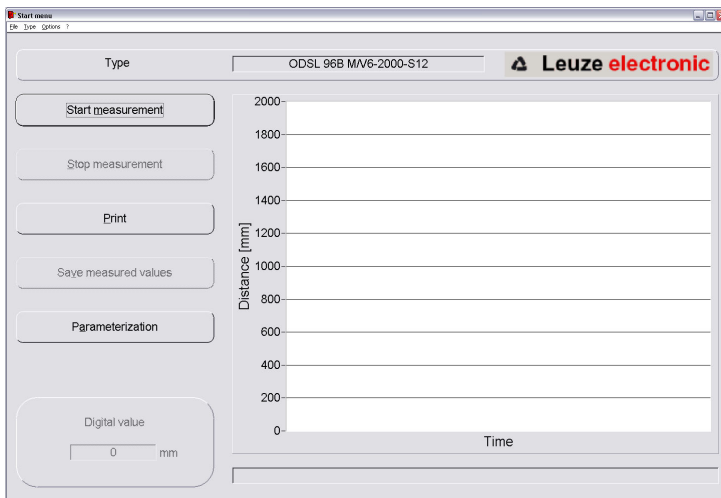


Figure 1.3:ODS 96B configuration software - main window

The **menu bar** of the ODS 96B configuration software offers the following functions

- **File** -> Exit program
- **Type** -> Load: Select the device type which is to be configured
- **Options** -> Language and interface selection. German and English are the available languages. Under Interface, you must select the COM port to which the ODS 96B is connected. The necessary communication parameters are automatically set for the interface.

Additional functions can be executed in the **main window**:

- **Start measurement** and **Stop measurement** are used to graphically represent the measurement values in the main window.

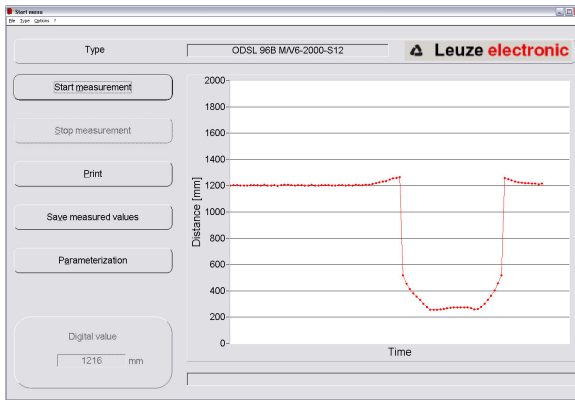


Figure 1.4:ODS 96B configuration software - measurement

- Use **Print** to send the currently detected measurement curve to the default Windows printer.
- **Save measured values** saves the current measurement values in a text file
- **Parameterization** opens the configuration window, see next chapter

1.5 Configuration window

The individual menu items are self-explanatory and correspond to the menus of the OLED display in the ODS 96B. Chapter "Configuration / menu structure ODS 96B" of the technical description ODS 96B contains a description of possible settings on page 31.

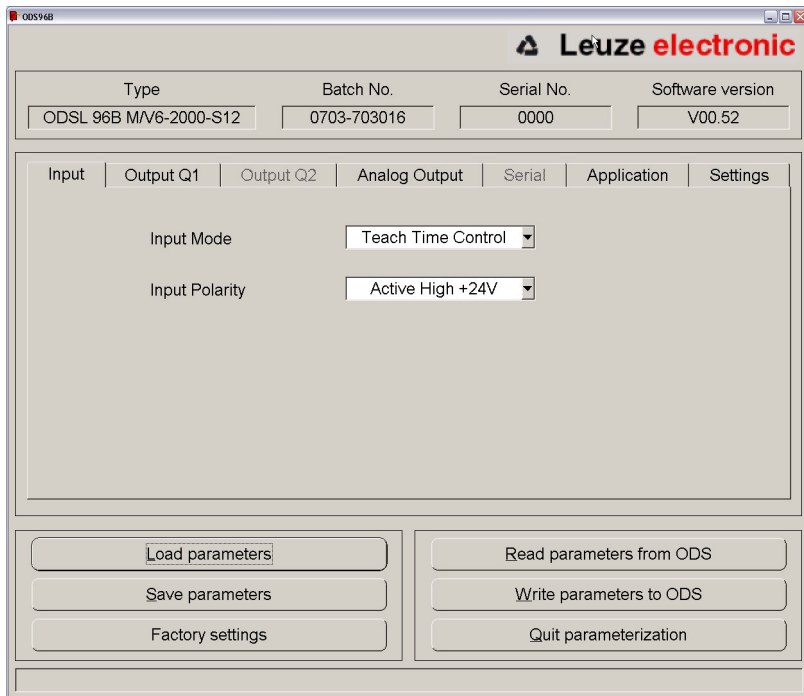


Figure 1.5:ODS 96B configuration software - configuration window

1.5.1 Description of the command buttons

The command buttons at the bottom of the screen have the following functions:

Load parameters

Loads a saved configuration from the hard disk.

Save parameters

Saves a created configuration on the hard disk.

Factory settings

Resets the connected ODS 96B to factory settings.

Read parameters from ODS

Reads and displays the configuration of the connected ODS 96B.

Write parameters to ODS

Saves the current configuration in the non-volatile parameter memory of the ODS 96B

Quit parameterization

Ends the program

***Notice***

Leuze electronic can only deliver distance sensors with default settings. You as customer are responsible for correct storage of your changed data sets. Back-up your device configuration on data carriers.